

# POSSIBILITIES

FALL 2014

Texas A&M Information Technology

ABOUT THIS ISSUE

## Keep it Under Wraps

Keeping your accounts safe in the cloud protects your personal information and helps reduce risk of identity theft. Use the information gathered here to stay secure.

If you have any questions about an IT service, contact Help Desk Central at 979.845.8300 or [helpdesk@tamu.edu](mailto:helpdesk@tamu.edu).

Tell us what you think about this newsletter. Send us an email at [tamu-it-coms@tamu.edu](mailto:tamu-it-coms@tamu.edu).



## Celebrity Photo Hack:

*Could it happen to you?*

After the recent large-scale hacking incident that posted many celebrities' private photos online, are you asking, "Is my data safe online?" Like most people, these celebrities were backing up their photos, videos, email and other data in Apple's iCloud, Google Cloud or similar services. These personal accounts appear to have been compromised by attackers using typical phishing techniques, such as guessing user names, passwords and answers to security questions.

*continued inside →*

**FIGHT BACK**

Battle online threats and win prizes at [security.tamu.edu](http://security.tamu.edu)!



(continued from front)

Take these steps to avoid a similar fate (since it's hard to explain naked photos of you all over the Internet):

**Always use strong passwords.**

Read tips for choosing memorable, strong passwords at [u.tamu.edu/strong](http://u.tamu.edu/strong). Don't use common, easily guessed passwords

**Choose security questions and answers that can't be easily guessed.**

Make sure the answers don't include information found through an Internet search, such as birth place, names of family members, phone number and home address.

**Enable two-factor login verification, if available for a service.**

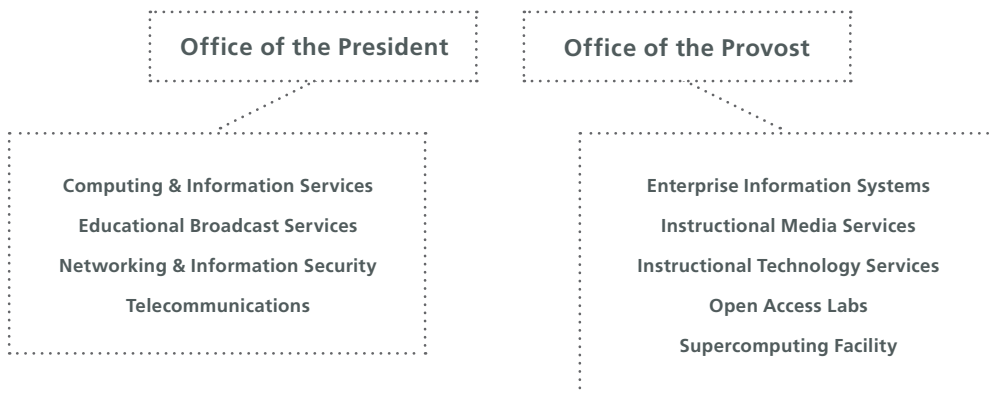
It provides a extra layer of security to prevent someone from hacking your important accounts. It requires both "something you know" (like a password) and "something you have" (like your phone). To log in with a two-step process, you enter your password, then a code is sent to your phone. Only after entering this code will you get into your account.

*Note: You can choose not to ask for a code again on your computer.*

---

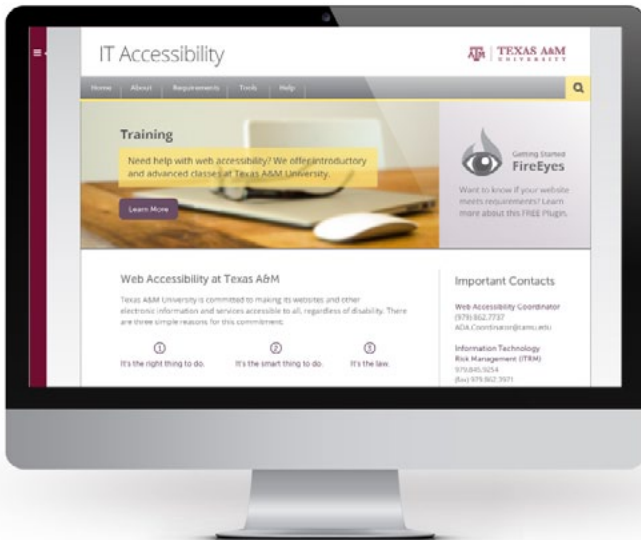
# IT Reorganization

Texas A&M Information Technology was reorganized recently. The infrastructure, security and central support units moved to the Office of the President, while the research and instruction-oriented units remained with the Office of the Provost. Even though we are reporting to different bosses, we will continue working together to provide the best IT possible for the university.



# Quick Tour

The redesigned mobile-friendly IT Accessibility website ([itaccessibility.tamu.edu](http://itaccessibility.tamu.edu)) provides better tools and resources to help make websites and web content accessible. IT accessibility fosters an inclusive environment by ensuring electronic information can be navigated and understood by all, including people with disabilities.



Learn how everyone benefits from accessible websites.

Use tools to check accessibility of your website.

Take introductory or advanced training classes.

Read why Texas A&M has a legal responsibility to ensure its websites and other electronic and information resources are accessible.

COMING SOON

## Duo Two-Factor Authentication Project

Texas A&M Information Technology will begin the project to launch Duo two-factor authentication as soon as the final contract is signed. Duo can provide two-factor authentication for many applications. Visit [duosecurity.com](http://duosecurity.com) for more about the product.

## Information on the Fast Track

Texas A&M will have a 100-Gigabit per second (Gbps) network connection from College Station to Dallas by the end of December, replacing two existing 10-Gbps connections. The university already has a 100-Gbps connection to Houston. This expanded network will enable faster data transfer and provide protection against Internet service provider outages or fiber cuts.



## Beam Me up Scotty!

Exactly what is “the cloud” and can using it put me at risk? With all the recent news about data breaches, do you want to know the latest information to stay safe? Join Texas A&M Information Technology as we discuss today’s top IT security issues and how they relate to you and the university.

**Presenters:** Cheryl Cato, Director, IT Infrastructure & Operations, Computing & Information Services and Willis Marti, Director, Networking & Chief Information Security Officer, Networking and Information Security

**Date:** Friday, November 14 | **Time:** 8:30 to 10:00 a.m. | **Place:** General Services Complex, Room 101A

25

### Passwords You Should Never Use

Many people (not Aggies!) often use obvious passwords, such as a single dictionary word or basic character repeats or sequences. These weak passwords are easy to detect by humans or computers. Here is the hall of shame’s 25 most common passwords\*:

*\*[splashdata.com/press/worstpasswords2013.htm](http://splashdata.com/press/worstpasswords2013.htm)*

- |              |                |               |
|--------------|----------------|---------------|
| 1. 123456    | 10. adobe123   | 19. sunshine  |
| 2. password  | 11. 123123     | 20. 12345     |
| 3. 12345678  | 12. admin      | 21. password1 |
| 4. qwerty    | 13. 1234567890 | 22. princess  |
| 5. abc123    | 14. letmein    | 23. azerty    |
| 6. 123456789 | 15. photoshop  | 24. trustno1  |
| 7. 111111    | 16. 1234       | 25. 000000    |
| 8. 1234567   | 17. monkey     |               |
| 9. iloveyou  | 18. shadow     |               |